

# **BRIDGE CHAIR**



**UNIVERSITY OF ZAGREB  
FACULTY OF CIVIL ENGINEERING  
STRUCTURES DEPARTMENT**



# BRIDGE CHAIR: Major projects

- ❑ Oldest Technical Chair of Zagreb University, founded in 1919
- ❑ Center of scientific research for bridges
- ❑ Productive design team with many large bridges and other structures constructed

Most Maslenica, 1997



Most Dubrovnik, 2002



# BRIDGE CHAIR: Major projects

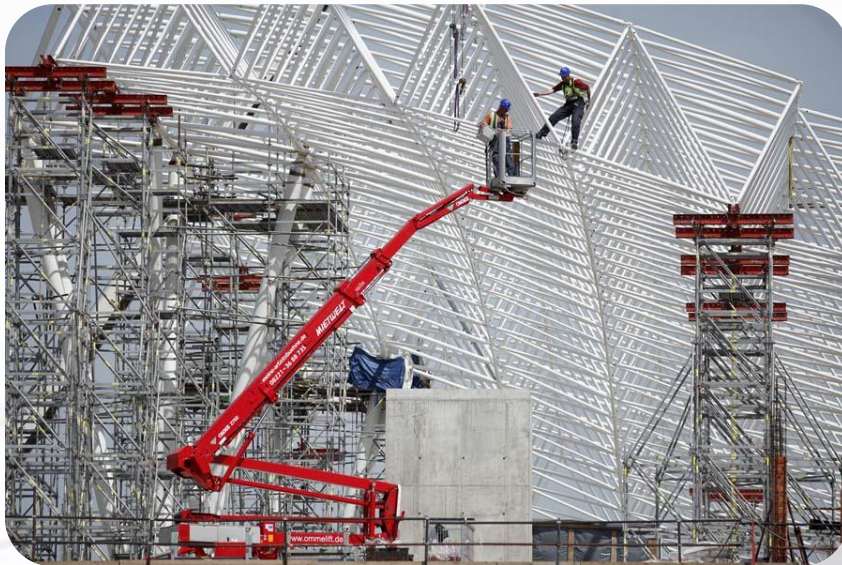
---



# BRIDGE CHAIR: Major projects

---

Zagreb airport terminal roof truss, 2017

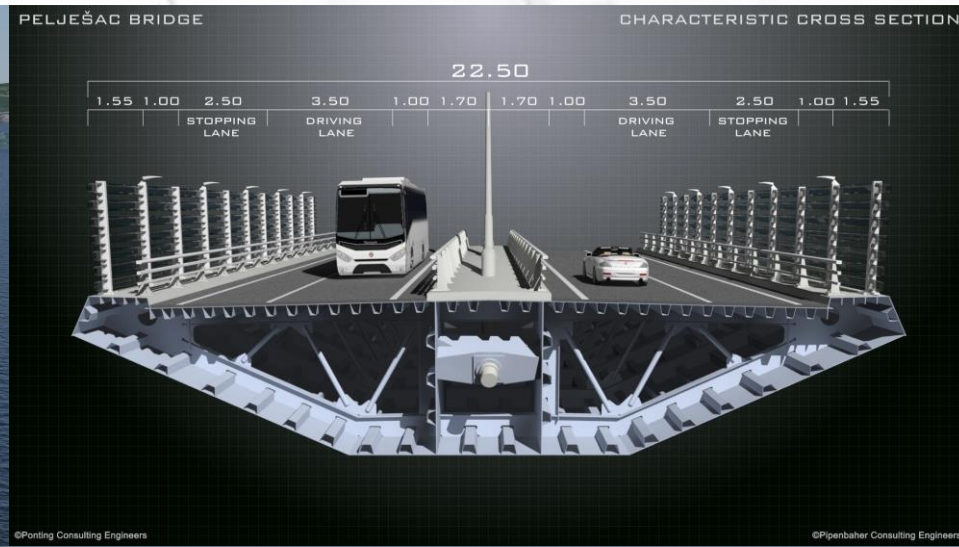


Skradin bridge, 2005



# BRIDGE CHAIR: Recent projects

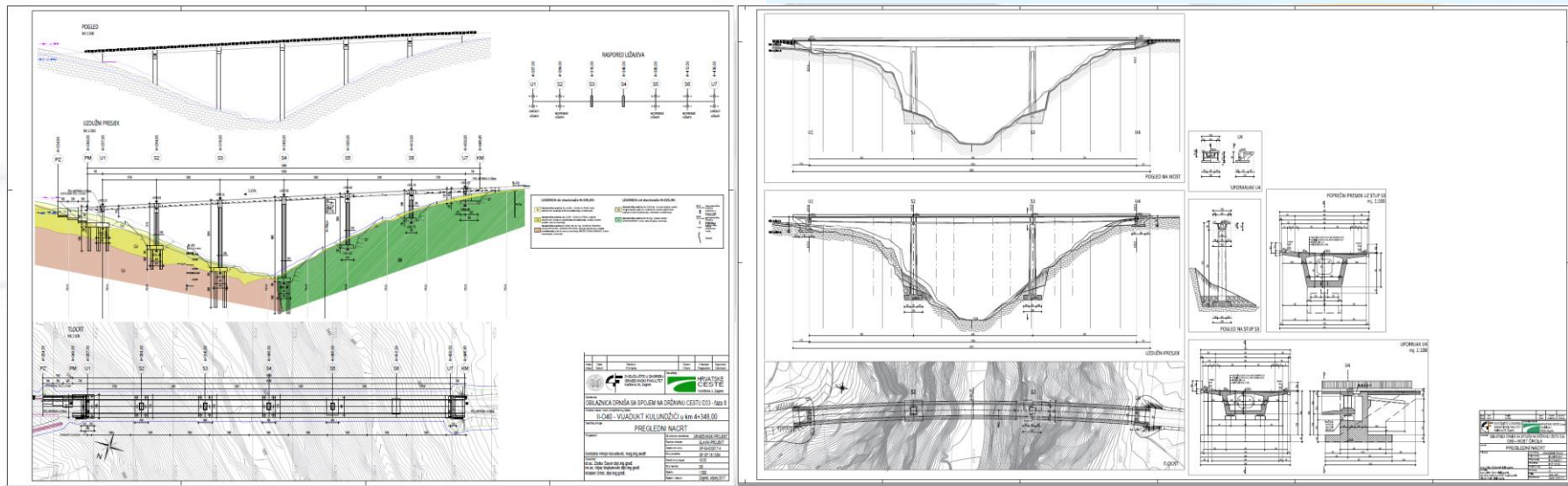
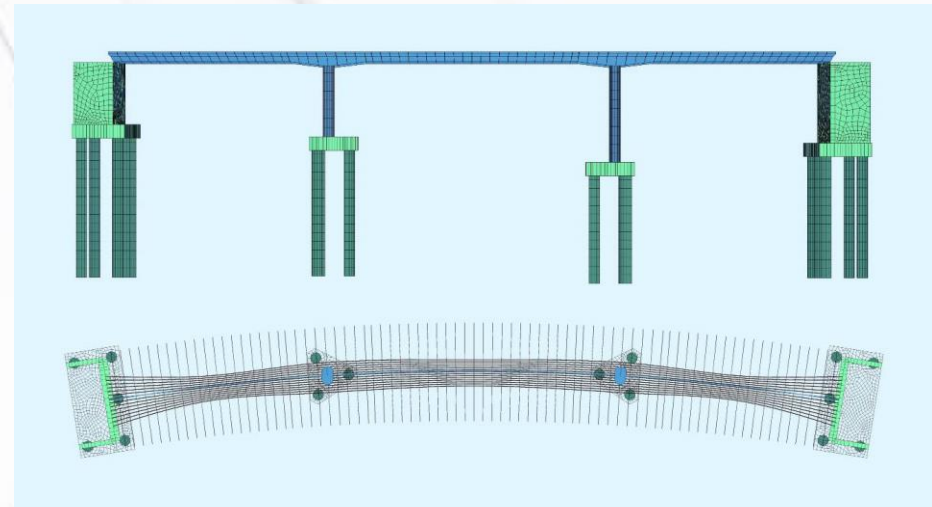
- ❑ Pelješac Bridge (in construction)
- ❑ Consortium: Faculty of Civil Engineering, Ponting d.o.o. and Pipenbaher Engineers d.o.o.
- ❑ Conceptual Design, Main Design, Construction Supervision, Detailed Design Consulting





# BRIDGE CHAIR: Recent projects

- ▣ Bridges on Drniš bypass







# BRIDGE CHAIR: Literature

## ▣ Textbooks for students



# BRIDGE CHAIR: Literature

- Manuals for students and professionals



# BRIDGE CHAIR: Student fieldwork

---

Pelješac bridge construction site visit



Svilaj bridge construction site visit



# BRIDGE CHAIR: Scientific projects

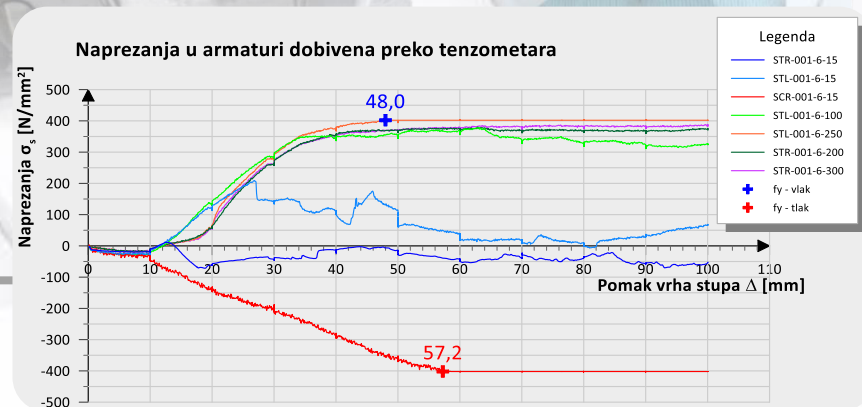
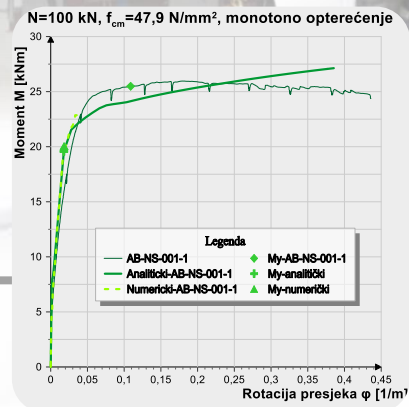
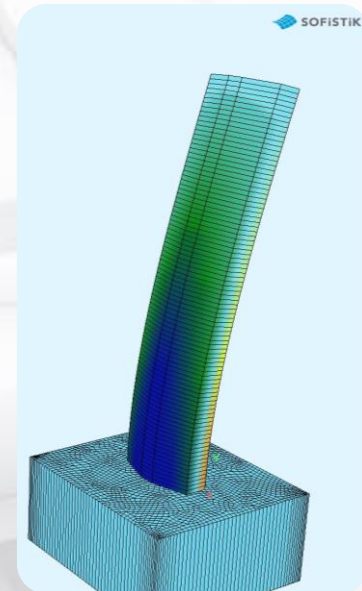
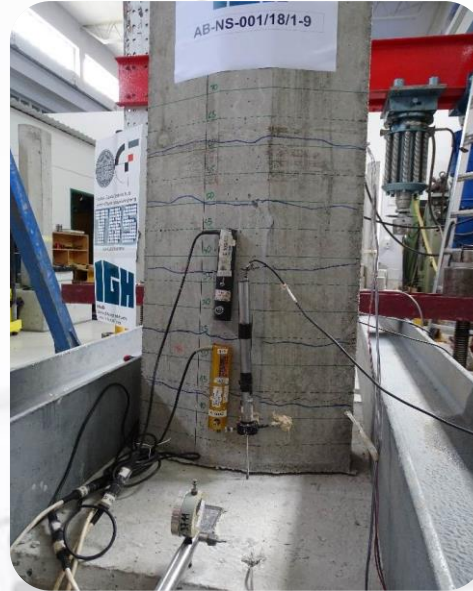
*Projects in the field of inspection, assessment and management of existing bridges*

- Influence of concrete damage on reinforcement corrosion - computer simulation and in-service performance of bridges: CODEbridges; <https://www.grad.unizg.hr/codebridges>
- Action TU1402: Quantifying the value of structural health monitoring; [www.cost-tu1402.eu](http://www.cost-tu1402.eu)
- Action TU 1406: Quality specifications for railway bridges, standardisation at a European level; [www.tu1406.eu](http://www.tu1406.eu)
- „Durability of reinforced concrete structures - Croatian and Canadian practices“ CROCANDY



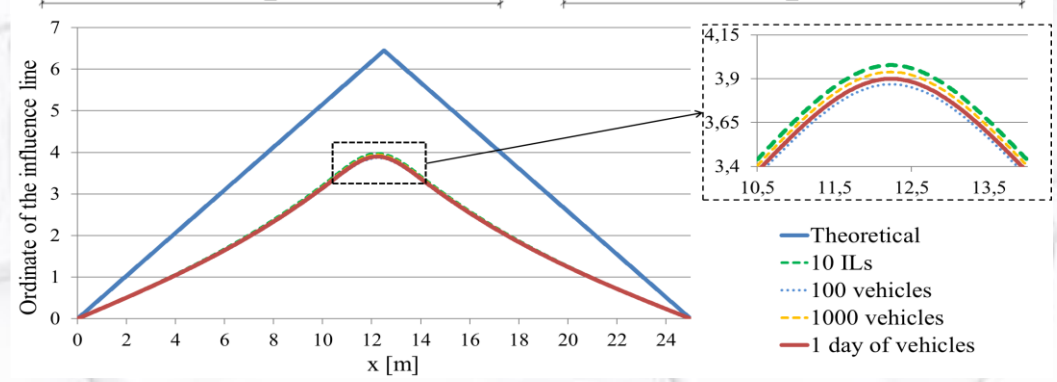
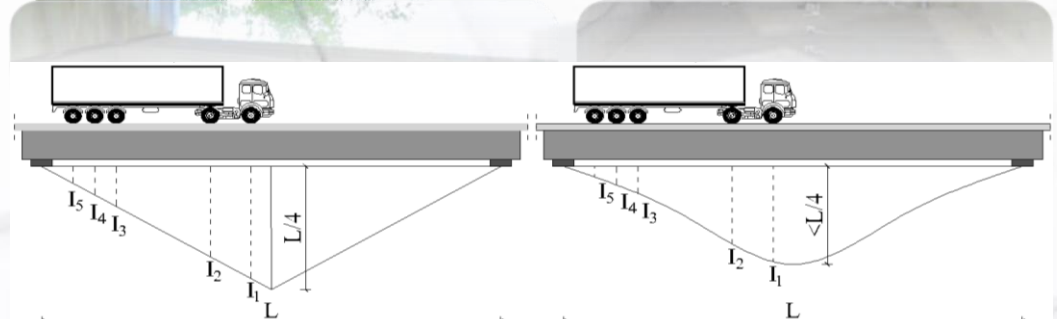
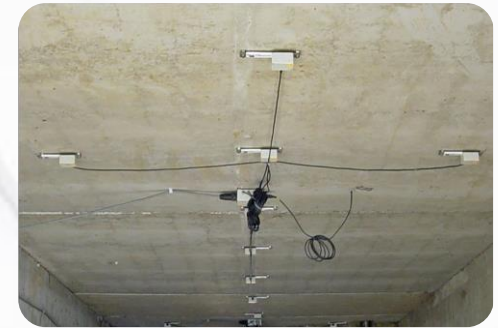
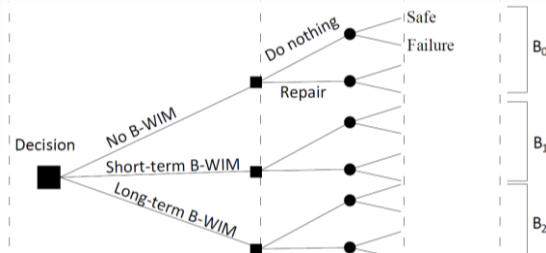
# BRIDGE CHAIR: Research

## □ Detection of bridge column ductility level



# BRIDGE CHAIR: Research

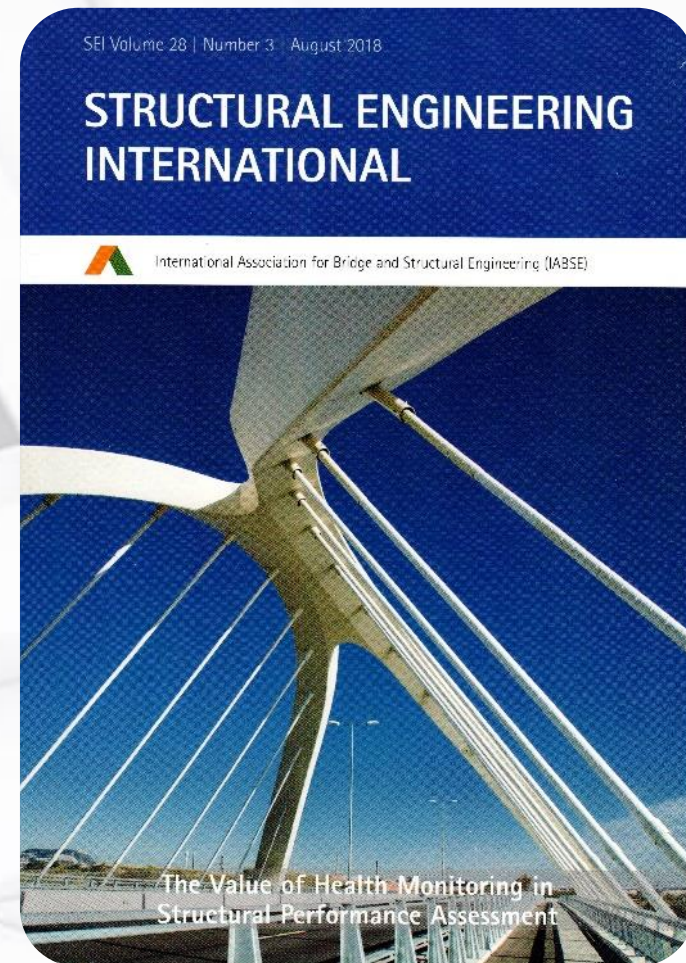
- Bridge monitoring cost-effectiveness evaluation





# BRIDGE CHAIR: Other activities

- Active memberships and participation in various Croatian and international associations
  - IABSE Commission 1 Performance & Requirements for Structures  
<https://iabse.org/Committees/Technical-Groups/Commissions/Commission-1>
  - Structural Engineering International journal Editorial Board  
<https://iabse.org/Committees/Technical-Groups/SEI-Editorial-Board>
  - Frontiers in Built Environment journal Editorial Board  
<https://www.frontiersin.org/journals/built-environment>





# BRIDGE CHAIR: Volunteering

---

- Post earthquake inspections



# BRIDGE CHAIR



**Prof. Ana Mandić Ivanković • Associate prof. Anđelko Vlašić •  
Assistant prof. Jelena Bleiziffer • Assistant prof. Marija Kušter Marić •  
Mladen Srbić, Ph.D. • Dominik Skokandić, Ph.D. • Zlatko Šavor, Ph.D. •  
Gordana Hrelja Kovačević, Mag.Ing. • Nijaz Mujkanović, Mr.Sc.**